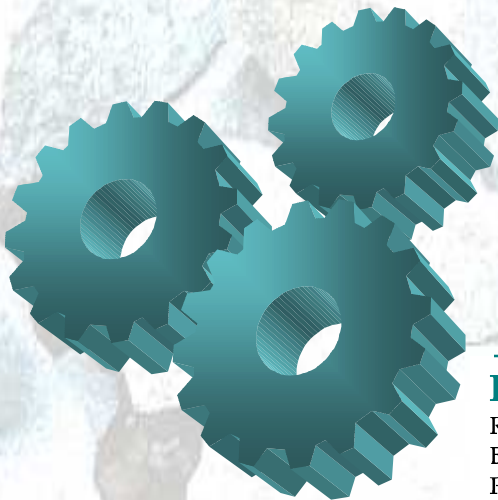


## *Hi-Tech Sparrow 2" DTH Hammer*

**HI-TECH**



### **HI-TECH GROUP OF INDUSTRIES**

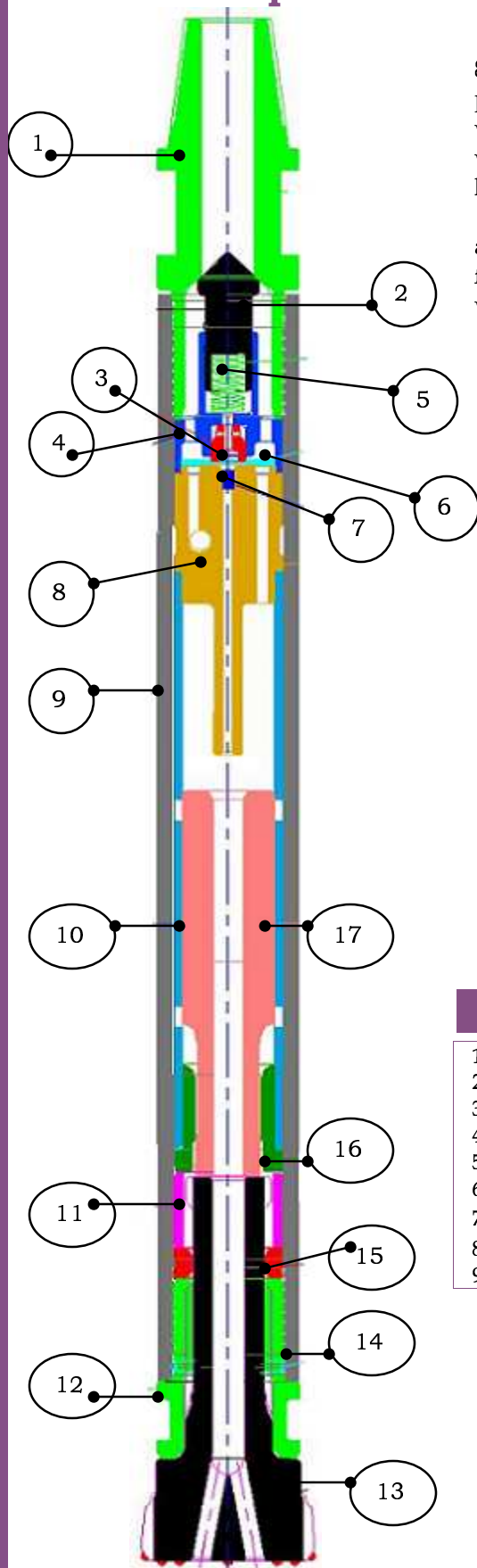
Regd. Office: Plot #V-34A, 7<sup>th</sup> Main, 2<sup>nd</sup> Stage, Peenya Industrial Area,  
Bangalore - 560058, India

Phone: 0091-80-28361397, 28361423, 28362870 Fax: 0091-80-28363597, 41177860

E-mail: [sumanth@hi-techcluster.com](mailto:sumanth@hi-techcluster.com), [sumanth26@hotmail.com](mailto:sumanth26@hotmail.com), [hi\\_techpneum@vsnl.net](mailto:hi_techpneum@vsnl.net)

Website: [www.hi-techcluster.com](http://www.hi-techcluster.com)

## Hi-Tech Sparrow 2" Valved Hammer – HTS200



The HTS200 is valved DTH Hammer for drilling 64mm – 89mm (2½" – 3½") dia. hole over wide range of operating air pressures. This hammer is designed for small diameter applications where fast penetration rates are required. HTS200 is used for water well drilling, geological surveys, micro piling, roof bolting, and blast hole applications.

The HTS200 is supplied with a 2⅜" API REG. pin Backhead, as standard but other connections are available on request. A positive fitting water check valve guards against ingress of ground water when the air is shut off.

### COMPONENT PARTS

Sl No	Description	Part Number
0	<b>Complete Hammer</b>	<b>HTS200</b>
1	Back Head	HTS202
2	Check Valve	HTS206
3	Valve Centralizer	HTS217
4	Chest Valve	HTS205
5	Check Valve Spring	HTS213
6	Flapper Valve	HTS207
7	Air Metering Plug	HTS212
8	Beveled Valve Housing	HTS204
9	Wear Sleeve	HTS201
10	Inner Cylinder	HTS219
11	Bit Retainer	HTS211
12	Front Chuck	HTS203
13	Bit	HTSB200
14	Chuck Sealing Ring	HTS203CS
15	Bit Lock	HTS226
16	Bearing	HTS209
17	Piston	HTS208

### HAMMER SPECIFICATIONS

1.	Hammer Diameter	62.0 mm
2.	Hole Range	70.0mm – 90.0mm
3.	Bore	49.24 mm
4.	Hammer Weight	14.0 kg
5.	Length Shoulder to Shoulder	830.0 mm
6.	Standard API thread	2⅜" API REG
7.	Piston Diameter	42.68 mm
8.	Piston Weight	1.8 kg
9.	Bit Shank Length	165.5mm

### AIR CONSUMPTION

PSI	CFM	BAR	Cu. Mtr/Min
100	55	6.9	2.0
150	148	10.5	4.1
200	200	14.0	5.5